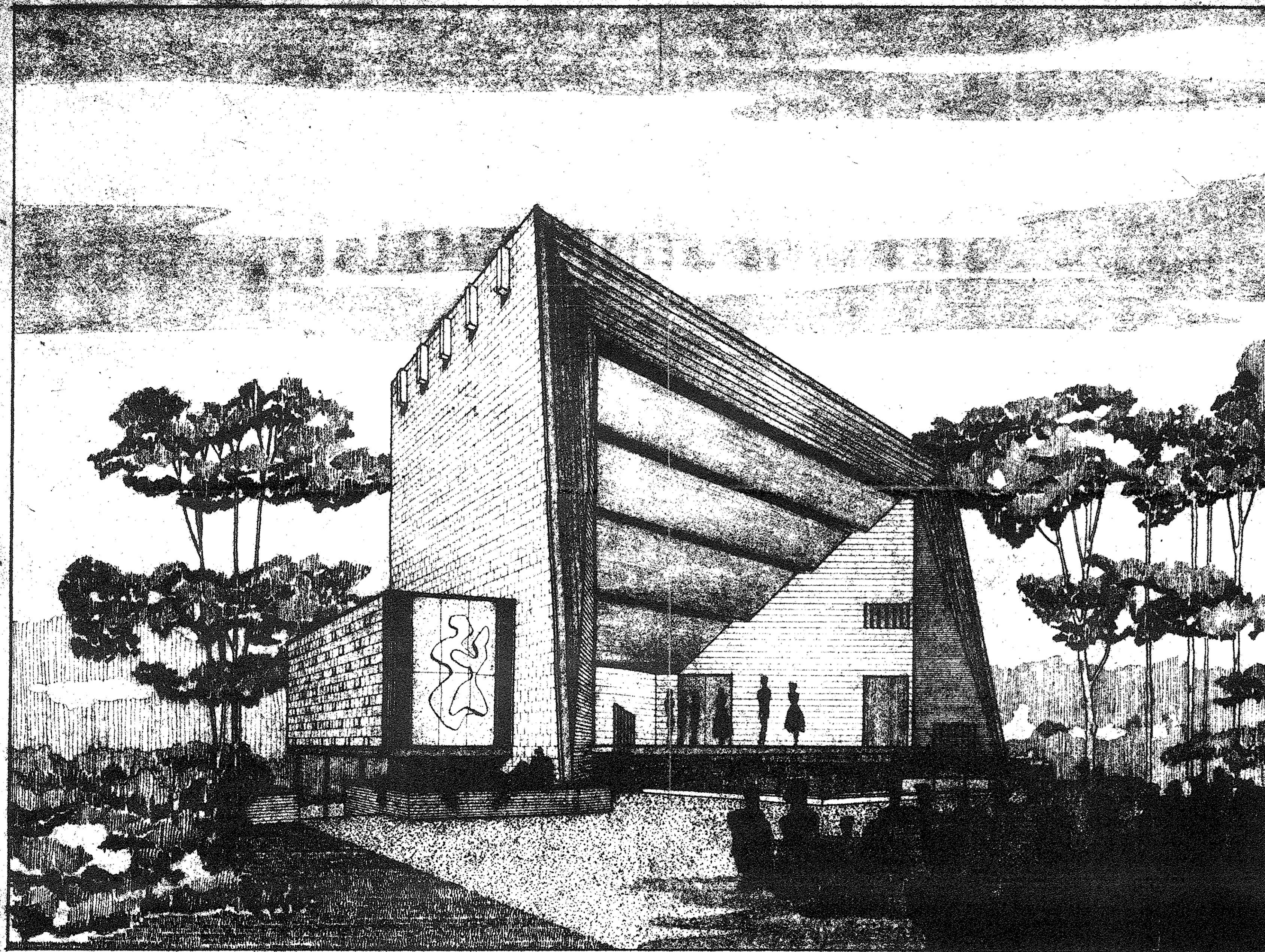


# THE EZIO PINZA THEATER



THE EZIO PINZA THEATER

SPONSORED BY THE STAMFORD JUNIOR CHAMBER OF COMMERCE

GORDON EDWARD JOHNSON  
ARCHITECT

SPONSORED BY  
THE STAMFORD JUNIOR CHAMBER OF COMMERCE, INC.  
PROJECT CHAIRMAN JOHN F. MERCEDE

ON THE GROUNDS OF  
THE STAMFORD MUSEUM AND NATURE CENTER, INC.  
HIGH RIDGE ROAD AND SCOFIELDTOWN ROAD  
STAMFORD, CONNECTICUT

ARCHITECT GORDON EDWARD JOHNSON  
STRUCTURAL CONSULTANT THEODORE F. COLLIER  
MECHANICAL ENGINEERS TIZIAN ASSOCIATES  
ACOUSTIC CONSULTANT UNITED ACOUSTIC CONSULTANTS

## INDEX OF DRAWINGS

- 1 SITE PLAN
- 2 LOWER LEVEL & FOUNDATION PLAN
- 3 STAGE LEVEL PLAN
- 4 GALLERY PLAN, DETAILS
- 5 STRUCTURAL NOTES, FLOOR FRAMING, COLUMN & LINTEL SCHEDULES
- 6 ROOF & GALLERY FRAMING PLANS, STRUCTURAL DETAILS
- 7 FRONT ELEVATION
- 8 REAR ELEVATION, SECTION
- 9 SIDE ELEVATION, SECTION
- 10 ACOUSTICAL PANELS

- M-1 LOWER LEVEL MECHANICAL PLAN  
M-2 STAGE LEVEL MECHANICAL PLAN

- E-1 LOWER LEVEL ELECTRICAL PLAN  
E-2 STAGE LEVEL ELECTRICAL PLAN  
E-3 GALLERY ELECTRICAL PLAN